

2021-2022

**Taiwan Foreign English Teacher Program Handbook
for Foreign English Teachers and Assistants**

Table of Contents

➤	WELCOME MESSAGE	3
➤	INTRODUCTION TO TAIWAN FOREIGN ENGLISH TEACHER PROGRAM	
-	Our Mission	4
-	Our Vision	4
-	TFETP Structure	4
➤	BEFORE ARRIVING IN TAIWAN	
-	About Taiwan	6
-	Things to Prepare Before Arriving	8
-	Precautions Agreement to COVID-19	13
-	What NOT to Bring to Taiwan	14
➤	AFTER ARRIVING IN TAIWAN	
-	Alien Resident Certificate (ARC) and Re-Entry Permit	15
-	Cellular Operators	17
-	Banking	18
-	Housing	20
-	Transportation	20
-	Taxation	21
-	Cost of Living	21
➤	GUIDELINES TO TEACH IN TAIWAN	
-	Job Description	22
-	2021 – 2022 TFETP Calendar	24
-	Emergency Contact and Resources	26
➤	USEFUL LINKS AND RESOURCES	27

WELCOME MESSAGE

Congratulations on becoming part of the Taiwan Foreign English Teacher Program! We are more than happy to have you join our program and we fondly anticipate working with you for the following year.

We understand that this year has been a challenging year for everyone due to the COVID-19 pandemic, and we appreciated the effort you have made to apply for the TFETP.

You are an important member of this program and will certainly be a strong input to promote English education in Taiwan and developing Taiwan into a bilingual nation by 2030. We particularly look forward to the expertise, passion, and commitment you will bring into the classrooms and how you will play a crucial role in cultivating our students' cross-cultural appreciation and global awareness.

It is our pleasure to welcome you and we look forward to a successful journey with you.

Welcome to Taiwan!



INTRODUCTION TO TAIWAN FOREIGN ENGLISH TEACHER PROGRAM

Our Mission

- To improve the English listening, speaking, reading, and writing skills of elementary and secondary students in Taiwan.
- To develop innovative English curriculum and effective teaching methods through collaboration between foreign English teachers, foreign English teaching assistants, and Taiwanese teachers.
- To enhance the multicultural competence of foreign English teachers, foreign English teaching assistants, and local teachers and residents.

Our Vision

TFETP was launched by the Ministry of Education (MOE) to recruit foreign English teachers and teaching assistants to create more opportunities for Taiwanese students to learn English in schools nationwide.

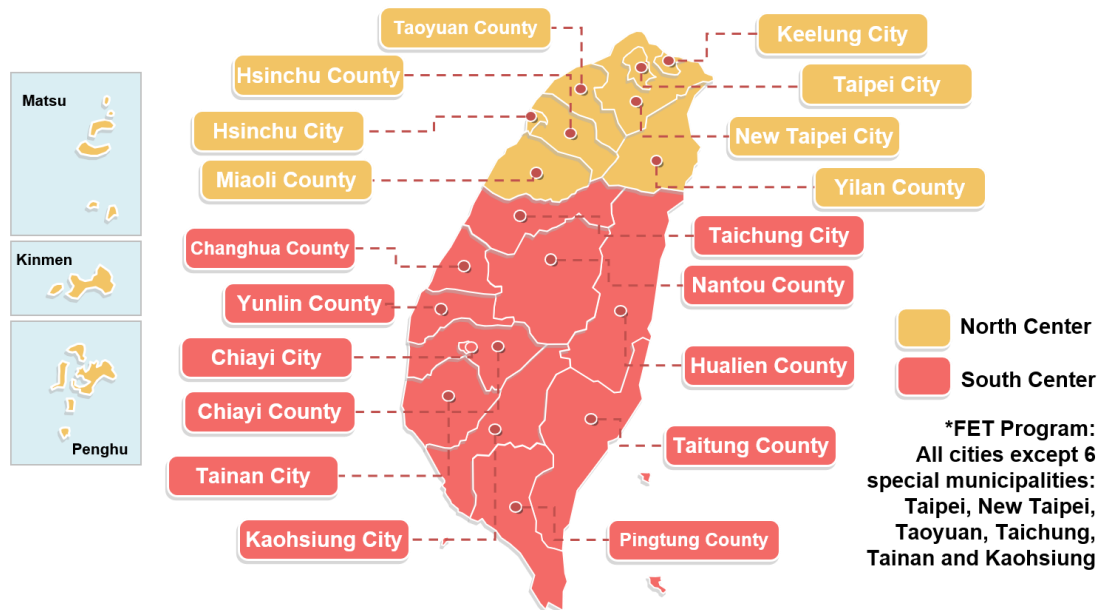
Prior to TFETP, the MOE established the Foreign English Teachers Program (FET Program) in 2004 to assist local governments in recruiting foreign English teachers for public elementary and secondary schools. The FET Program was expanded into the TFETP in 2021 to recruit more teaching talents in order to enhance the English skills of Taiwanese students.

TFETP Structure

TFETP consists of the FET Program, the North Center Project, and the South Center Project. Three of the centers all not only assist in the recruitment and professional development for the foreign English teachers and teaching assistants but also support and supervise them after they are assigned to public elementary and secondary schools in Taiwan.

The North Center is responsible for Hsinchu City, Hsinchu County, Keelung City, Kinmen County, Lienchiang County (Matsu), Miaoli County, New Taipei City, Penghu County, Taipei City, Taoyuan City, and Yilan County.

The South Center is responsible for Changhua County, Chiayi City, Chiayi County, Hualien County, Kaohsiung City, Nantou County, Pingtung County, Taichung City, Tainan City, Taitung County, and Yunlin County.



The three teams collaborate with one another to ensure the successful experience of incoming teachers and reach the goal of improving the overall English ability of Taiwanese students. By creating an immersive English learning environment, TFETP strives to promote cultural exchange and cultivate global awareness in Taiwanese society.

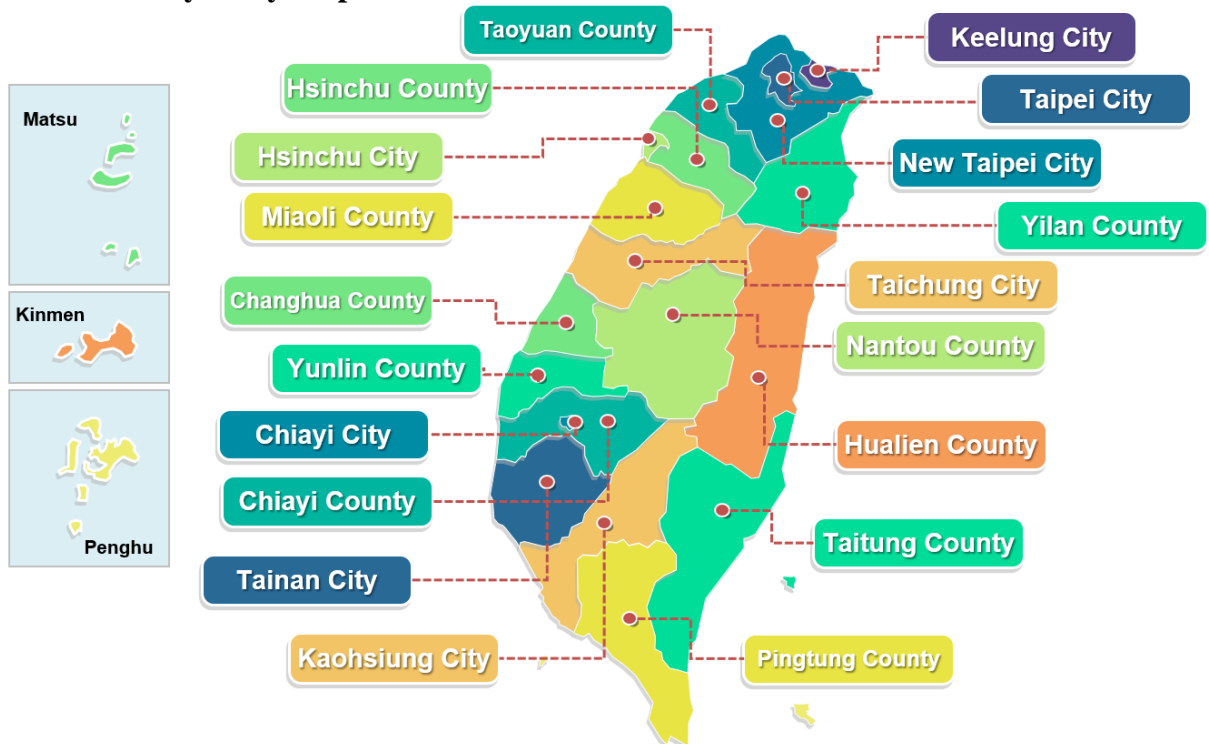
BEFORE ARRIVING IN TAIWAN

About Taiwan

Taiwan is an island situated in East Asia at the northwestern edge of the Pacific and possesses a great variety of terrains, forests, and marine ecosystems as well as cultural and ethnic diversity along with enchanting local customs and practices. Continue reading to learn more about Taiwan!

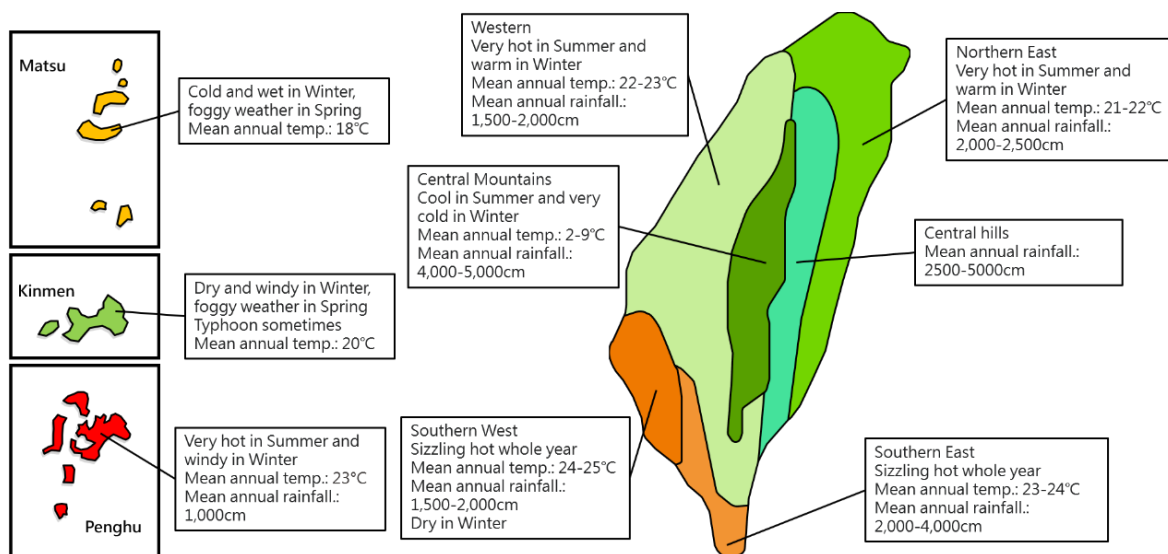
- Location: Asia-Pacific region
- Capital: Taipei City
- Area: 36,000 km²
- Population: 23.6 million (as of February 2020)
- Languages: Mandarin, Taiwanese (Hokkien), Hakka, aboriginal languages
- Religions: Buddhism, Taoism, Christianity, Islam, folk religions
- Currency: New Taiwan Dollar (NT\$ or NTD)
- Time zone: GMT+8

● County / City Map



- **Climate in Taiwan**

1. Taiwan has a long summer and a mild winter due to its position on the Northern Tropic (Tropic of Cancer) and boasts a variety of climate zones. Taiwan’s northern and central regions are subtropical, its southern regions are tropical, and its inland mountainous regions are temperate. Generally, average temperatures in Taiwan range from 18°C in winter to 29°C in summer. Temperatures can reach below 10°C in winter and surpass 35°C in summer.
2. Visit the website to discover more: [Central Weather Bureau](#)



- **Electricity in Taiwan**

In Taiwan, the standard voltage is 110 V and the standard frequency is 60 Hz. The standard power plugs and sockets in Taiwan are the two types below. The right socket also works for the left type of plug.



Source: [Taiwan Tourism Bureau](#)

Things to Prepare Before Arriving

● Work Permit

To work in Taiwan with a foreign nationality, you will need to provide three important documents, including a work permit, Resident Visa, and an Alien Resident Certificate.

Starting from February 8th, 2018, the work permit application for school teachers shall all be submitted to and issued by the Ministry of Education. The school you are assigned with will be responsible for your work permit application.

To apply for your work permit, you may receive an email from our team requesting you, for example, to provide a clear scanned copy/image of your document, a renewed document, and so on. Please check your inbox to assure that you have provided all the documents for the work permit application in time.

The required documents include:

- Photocopy of the passport of the employed foreign worker or ARC
- Degree Certificate
- Police Check/Police Clearance Certificate (issued after January 1st 2021)
- Photocopy of teaching qualification certificate, including State-Issued Teaching License/Certificate

Once you receive the work permit from the assigned school, you may start to apply for your Resident Visa according to the following instructions.

- **Resident Visa**

To enter Taiwan, you need to hold a Resident Visa for an employment purpose. Specifically, you need to apply for a “Resident Visa for White Collar Worker.” To apply for the visa, you may find more information through the link attached. (<https://www.boca.gov.tw/cp-166-276-48430-2.html>) If you already have an Alien Resident Certificate (ARC), you do not need to apply for a resident visa and you may find more information on page 15 in this handbook.

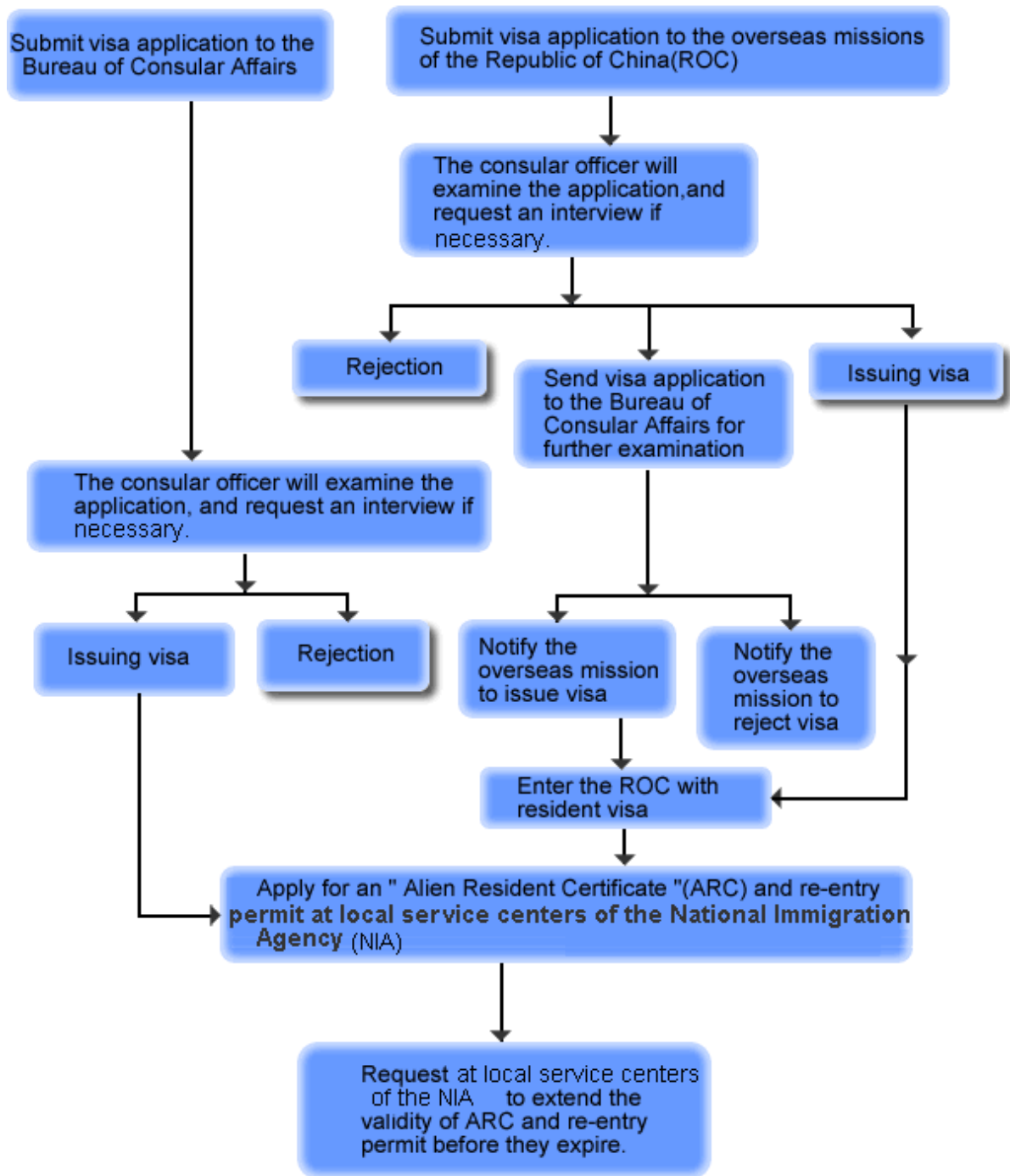
Required documents for resident visa:

- [Application form](#)
- Two color passport-size photos
- Passport and one photocopy of the passport (The passport must be valid for at least 6 months and there are blank pages left in it.)
- Original and one photocopy of work permit issued by competent authorities of the central government of the R.O.C..

→ You may find the location to apply for your Resident Visa via the link provided:

<https://www.boca.gov.tw/sp-foof-countrylp-01-2.html>

Flow Chart For Resident Visa Application



Source: [Bureau of Consular Affairs website](http://www.boca.gov.tw)

If you have any queries, you may also find more information through the Bureau of Consular Affairs, Ministry of Foreign Affairs, Visa FAQ.

(<https://www.boca.gov.tw/lp-181-2-xCat-1.html>)

- **Currency**
 1. We suggest you bring an amount of USD\$5,000 for your first two months settling, including but not limited to the 21 days quarantine, housing with deposit and first-month rent, public transportation, cellular operator, and extra necessities. Find more information about the [arrival declaration](#).
 2. The New Taiwan Dollar is the official currency of Taiwan and is usually abbreviated as TWD, NT\$, or NTD. The most commonly used denominations are NTD\$100, NTD\$500, and NTD\$1000 notes, but NTD\$200 and NTD\$2000 notes are sometimes encountered. NTD\$50, NTD\$10, NTD\$5, and NTD\$1 coins are also widely circulated. Cash is commonly used in Taiwan, but most stores and other establishments accept major credit cards (e.g. VISA, Mastercard, JCB), local stored-value cards (e.g., EasyCard and iPass), and digital payment systems (e.g., LINE pay and JKOPAY). Personal checks are not typically used in Taiwan for everyday payments.
 3. Foreign currencies can be exchanged at government-designated banks or at the airport.
 4. Find more information on [foreign exchange rates](#).
- **Air ticket reimbursement**

According to the contract, the air ticket reimbursement relevant information is as the following:

1. A single-trip, economy-class flight ticket to Taiwan from your residing place in the nationality country or the nearest airport to his/her working place (after being employed by your assigned school) can be reimbursed.
2. The maximum amount of flight ticket subsidy is NT\$40,000 for a single trip and is NT\$80,000 for a round trip. The subsidy is based on the actual amount on the receipt.
3. The foreign exchange rate for the flight ticket subsidy shall be subject to the spot exchange rate announced by Bank of Taiwan for selling your targeted currency on the day ticket purchase (the date as indicated on the purchase receipt or proof of purchase)
4. You shall submit the flight ticket stub/boarding pass, flight ticket receipt, and

the photocopy of the passport with entry stamp to claim the reimbursement.

5. If you terminate the Contract before expiration for a service length under six months, your assigned school will not pay for your return trip.
6. According to the contract, foreign English teachers' spouse or one of your lineal blood relatives are provided with one single and one return economy class flight tickets from their residing place in the nationality country or the nearest airport in their working place (after being employed by your assigned school. The maximum amount of subsidy for the single/return trips of flight tickets shall be NT\$40,000 each trip and based on the actual amount spent. You may receive the flight ticket subsidies only when your spouse or one of your lineal blood relatives comes to Taiwan within three months after your arrival.

Your assigned school will be responsible for your air ticket reimbursement, and we suggest you confirm with the school to make sure of the reimbursement procedure.

- **Other notes**

1. Men wearing shoe sizes over 12 or women wearing shoe sizes over 8 should pack extra shoes since you may find it difficult to find shoes larger than the sizes mentioned above in Taiwan.
2. Remember to bring extra copies of your important documents, such as your passport, degree, police clearance, and so on.

Precautions Agreement to COVID-19

Since the COVID-19 situation is ongoing and the related regulations are subject to change, we suggest you keep updating your latest information through the links provided below before your arrival in Taiwan to ensure a safe and smooth travel:

1. [Quarantine System for Entry \(Aircraft version\)](#)
2. [COVID-19 Information Zone from Taoyuan International Airport](#)
3. [Taiwan Centers for Disease Control - Press Release](#)
4. [Taiwan Centers for Disease Control - COVID-19 FAQ](#)
5. [Bureau of Consular Affairs, Ministry of Foreign Affairs - Entry Restrictions to Taiwan](#)
6. [Ministry of Health and Welfare – Measures of COVID-19 – Timeline COVID-19](#)
7. [eMask Ordering System](#)
8. [Quarantine Hotels](#)
9. [Taoyuan International Airport Traffic Notice for Home Quarantine Travelers](#)
10. [Information for Foreigners in Taiwan - COVID-19 Epidemic News](#)

If you have any queries, you may also contact tfetp@deps.ntnu.edu.tw to seek assistance.

What NOT to Bring to Taiwan

- **Prohibited Items**

1. [Unauthorized animals and plants and their products](#) including meats and seeds, regardless of live, refrigerated, frozen, salted or seasoned, are strictly restricted from carrying into Taiwan.
2. Narcotics or psychotropic drugs prohibited by the [Narcotics Hazard Prevention Act](#) and the [Controlled Drugs Act](#): heroin, morphine, opium, cocaine, coca leaves, poppy, poppy seeds, amphetamine, marijuana, marijuana seeds, marijuana derivatives containing over 10ppm of Tetrahydrocannabinol (THC), derived products of the said materials, etc.
3. Please refer to [prohibited items](#) to get more details.

- **Declared Items**

1. [Medicines](#)
2. [Tobacco products and alcohols](#) above a certain amount.
3. [Money Laundering Controlled Items](#), such as Foreign currency, New Taiwan Dollar, negotiable, or gold, above a certain amount.

- **Suggested NOT to Bring Items**

1. Checks: most of the local stores do not receive checks.
2. Office supplies and stationery.
3. Toiletries: Taiwan will have all your bathroom needs.
4. Silverware, cooking utensils, and cups: plenty of those are cheap in Taiwan.
5. Anything that is too big but you can get in Taiwan, such as electronics, appliances, etc.

AFTER ARRIVING IN TAIWAN

Alien Resident Certificate (ARC) and Re-Entry Permit

The Alien Resident Certificate (ARC) is an ID card for a foreign national who holds a Resident Visa.

Therefore, a foreign national who enters with a Resident Visa shall apply for an ARC within 15 days from the next day of arrival in the R.O.C. (Taiwan) ; In the event that a foreign national changes his/her domicile or his/her place of employment during the period of his/her residency, he/she shall apply for registering the change within 15 days.

(Source and more information: [How does a foreigner renew or apply for an ARC?](#))

You are also very welcome to seek assistance from your assigned school for your ARC application.

- **Required documents for ARC:**
 - A completed application form.
 - ARC (the first petitioner shall appear at the local service center in person).
 - A passport with resident visa (A foreign national applying for modifications in the reasons for residency pursuant to Paragraph 2 of Article 23 of the Act, is exempt from being examined for an entry visa).
 - Related documents for residency: Employment or investment (including foreign nationals applying for modifying reasons of residency pursuant to Paragraph 2 of Article 23 of the Act): An approval letter issued by the competent authority and an In-service Certificate.
 - One 2'' x 2'' colored photo, front head and shoulder, taken within six months.
 - A foreign national who applies for an ARC reissuing shall submit a Declaration of Loss of ARC or a Crime Report.
 - Fee: One-year term: NT\$1,000.

If you fail to apply for an ARC within 15 days from the next day of your arrival in the R.O.C. (Taiwan), you will face an overdue penalty of NT\$ 2,000-10,000. If you fail to apply for registering the change within 15 days after you change your domicile or your place of employment during the period of your residency, you will face an overdue penalty of NT\$ 2,000-10,000.

If you have any queries, we suggest you seek assistance from the “Contact Information” from the [National Immigration Agency](#) or your assigned school.

Cellular Operators

1. You can find two types of SIM cards in Taiwan, prepaid-based and contract-based.

What to bring when you would like to get a SIM card:

- Prepaid-based SIM card: A valid passport
- Contract-based SIM card: A valid passport, Alien Resident Card (ARC), and a guarantor for some operators.

Where to go when you would like to get a SIM card:

- Prepaid-based SIM card: Convenience stores such as [7-11](#) and FamilyMart and the telecommunications companies
- Contract-based SIM card: Only provided by the telecommunications companies

2. The major telecommunications companies in Taiwan are listed below. You may check on the websites to get up-to-date information.

Asia Pacific Telecom (APTG)	
Chunghwa Telecom	
FarEasTone	
Taiwan Mobile	
TSTAR	

Banking

- **Bank Account**

1. Open a bank account to receive your salary.
2. Since not all the banks in Taiwan have branches in every county and city, we suggest you open your bank account with a bank that has a branch near your home or workplace.
3. To open a bank account, you must have an Alien Resident Card (ARC) and a valid passport. Some banks request a personal chop (印章 Yīnzhāng).

- **Automatic Teller Machine (ATM)**

1. ATMs are everywhere in Taiwan. You can find it in any bank branch, most 24-hour convenience stores, and some MRT or train stations. Most of the ATMs give the option of Chinese or English instructions.
2. Local cards are accepted in every ATM, even in different banks. Transactions fee will be charged while withdrawing from different bank machines.
3. International cards issued by foreign banks are most, but not always, accepted. Check the ATM stickers (PLUS, CIRRUS, UNIONPAY, etc.) before inserting your international card.
4. Useful link: [ATM map \(Chinese\)](#)

● **Banks to Exchange Foreign Currency**

Name	Main Branch Address	Phone No.
Bank of Taiwan	No. 120, Sec. 1, Chongqing S. Rd., Zhongzheng Dist., Taipei City	02-2349-3456
Land Bank of Taiwan	No. 46, Guanqian Rd., Zhongzheng Dist., Taipei City	02-2348-3456
Taiwan Cooperative Bank	No. 225, Sec. 2, Chang'an E. Rd., Songshan Dist., Taipei City	02-2173-8888
First Bank	No. 30, Sec. 1, Chongqing S. Rd., Zhongzheng Dist., Taipei City	02-2348-1111
Hua Nan Bank	No. 123, Songren Rd., Xinyi Dist., Taipei City	02-2371-3111
Chang Hwa Bank	No. 38, Sec. 2, Ziyou Rd., Central Dist., Taichung City	04-2222-2001
The Shanghai Commercial & Savings Bank, Ltd.	12F.~3F., No. 149, Sec. 2, Minsheng E. Rd., Zhongshan Dist., Taipei City	02-2581-7111
Taipei Fubon Bank	No. 169, Sec. 4, Ren'ai Rd., Da'an Dist., Taipei City	02-2771-6699
Cathay United Bank	No. 7, Songren Rd., Xinyi Dist., Taipei City	02-8722-6666
Mega International Commercial Bank	No. 100, Jilin Rd., Zhongshan Dist., Taipei City	02-2563-3156
CitiBank	No. 1, Songjihih Rd., Xinyi Dist., Taipei City	02-8726-9600
Chunghwa Post Co., Ltd.	No. 55, Sec. 2, Jinshan S. Rd., Da'an Dist., Taipei City	02-2321-4311
SinoPac Bank	No. 36, Sec. 3, Nanjing E. Rd., Zhongshan Dist., Taipei City	02-2517-3336
E.SUN Bank	No. 117 or No. 115, Sec. 3, Minsheng E. Rd., Songshan Dist., Taipei City	02-2175-1313

Source: [Central Bank](#)

For more information, please visit the [Central Bank of the Republic of China \(Taiwan\)](#) or [Financial Supervisory Commission](#) website.

Housing

- **Rental**

1. Most Taiwanese live in apartments in cities and live in houses in the suburbs. The most commonly used rental housing website is [591](#). Since the website/app does not support the English language, if you barely know Mandarin, we would suggest you search on Facebook “Groups”, such as [Looking for Roommates or Apartments in Taipei and Taiwan](#). You are also strongly encouraged to seek assistance from the school you are assigned with.
2. Before signing a contract with the landlord, you need to be aware of quite a few things. We suggest you read some posts on the internet written by expats having been living in Taiwan to understand more before the first move. It might be a good idea to have someone from your assigned school check the contract for you before signing.
3. Other useful links: [Contact Taiwan](#), [Forumosa](#).

Transportation

- **Public Transportation**

Public transportation systems are convenient in major city areas.

1. Railway: [Taiwan High Speed Rail](#), [Taiwan Railway](#)
2. MRT: [Taipei Metro](#), [Taoyuan Metro](#), [TaiChung Metro](#), [Kaohsiung Metro](#).
3. Bus: [Intercity Bus](#)
4. Metro Cards: [EasyCard](#) and [iPass](#) are interchangeable in Taiwan. You can use them for taking MRTs, commuter trains, buses, [Youbikes](#), and even payments in convenience stores.

Taxation

As the definition from the [Difference between residents/non-residents of the R.O.C.](#) regarding the [Income Tax Act of the R.O.C.](#), if a foreign national who has no registered residence in the R.O.C. but stays for 183 days or longer, then counting from the first day of the year (January 1st), the foreign national is regarded as a resident of the R.O.C. If you are not the above situation, you need to look for more information from the website to confirm your income tax act of the R.O.C.

The tax rate for a foreign national is 18% for the 183 days, which the first day counts from January 1st, within a taxable year (from January 1st to December 31st). After 183 days, the rate will drop to approximately 6% to 10% for the rest of the year. At the end of each year, people who stayed in the country for at least 183 days (from January 1st to December 31st) will be able to claim a tax refund on the tax paid in the first 183 days.

As the situation varies in each case, you may find out more information from the [Instructions for Alien Individual Income Tax](#) and [Foreign Individual Income Tax](#).

Cost of Living

People in Taiwan have access to inexpensive and quality food, public transportation, medical expenses, and other daily needs, all with a great variety of choices. As reported by the Big Mac index from the global business data platform Statista, a Big Mac as of January 2021 costs \$2.57 USD in Taiwan, whereas a Big Mac costs \$5.66 USD in the United States, \$4.44 USD in United Kingdom, \$4.1 USD in South Korea, and \$3.46 USD in China.

According to the world's largest cost of living database NUMBEO, Taiwan is 34% less expensive than New York. To see more information, you can visit <https://www.numbeo.com/cost-of-living/in/Taipei>

GUIDELINES TO TEACH IN TAIWAN

Job Description

- **Foreign English Teacher**

Foreign English teachers work with Taiwanese teachers to improve the quality of English curriculum, teaching, and assessment, enhance the professional standards of English teaching, create a positive and immersive English learning environment, and strengthen the overall English abilities of students. The main job duties for foreign English teachers are listed below:

1. Work hours are 5 days a week, 8 hours a day.
2. Conduct co-teaching with Taiwanese teachers for up to 20 periods a week.
3. Provide a positive English learning environment for students by taking part in various school activities, exhibitions, performances, and projects. Create a rich immersive English learning environment via diverse approaches to enhance student's overall English ability, learning interests, and confidence.
4. Participate in English teaching meetings, professional development activities, extracurricular activities, competitions, exhibitions, performances, and other related projects.
5. Prepare lessons with colleagues or independently, including writing lesson plans, preparing teaching materials, grading assignments, and assessing evaluations.
6. Accept assignments from the school to participate in English teaching professional development activities, competitions, exhibitions, performances, and other related affairs organized by the government.

- **Foreign English Teacher Assistant**

Foreign English teaching assistants work under the guidance of Taiwanese teachers to create a positive, diverse, and immersive English learning environment that encourages students to enjoy English, actively learn English, and improve their overall English ability. The main job duties for foreign English teaching assistants are listed below:

1. Service hours are 5 days a week, 8 hours a day.
2. Assist Taiwanese teachers during class up to 20 periods a week.
3. Assist in various school activities, presentations, exhibitions, performances, and projects. Create a rich immersive English learning environment via diverse approaches to enhance student's overall English ability, learning interests, and confidence.
4. Participate in English teaching meetings, professional development activities, extracurricular activities, competitions, exhibitions, performances, and other related projects.
5. Prepare lessons with colleagues or independently, including writing lesson plans, preparing teaching materials, grading assignments, and assessing learning performance.
6. Accept assignments from the school to participate in English teaching professional development activities, competitions, exhibitions, performances, and other related affairs organized by the government.

2021 – 2022 TFETP Calendar

- **TFETP Calendar**

Time	Activity
August or September	Online Orientation
January or February	Professional Development Workshop

- **Taiwan National Holidays Calendar**

January 1st – 3rd, 2021	International New Year
February 10th – 16th, 2021	Chinese New Year
February 27th – March 1st , 2021	228 Peace Memorial Day
April 2nd – 5th, 2021	Children’s Day and Tomb Sweeping Festival
June 12th – 14th, 2021	Dragon Boat Festival
September 18th – 21st, 2021	Mid-Autumn Festival
October 9th – 11th, 2021	National Day
December 31st, 2021– January 2nd, 2022	International New Year

In Taiwan, holidays are adjusted to provide longer holiday breaks. However, these adjusted holidays must be compensated to maintain the standard number of yearly public holidays. The compensation workdays for 2021 are as follows:

February 20 th	Chinese New Year
September 11 th	Mid Autumn Festival

Emergency Contact and Resources

- Useful Phone Numbers

Contact	Phone No.
Emergency Numbers (Free Service)-Police	110
Emergency Numbers (Free Service)-Fire, Ambulance	119
Emergency Numbers (Free Service)-Emergency Call (For Bad Cell Phone Reception)	112
Overseas Operator	100
Chinese Local Directory Assistance	104
Chinese Long Distance Directory Assistance	105
English-language Directory Assistance	106
Time	117
Weather	166
Traffic	168
Information For Foreigners In Taiwan	0800-024-111
Ministry of Foreign Affairs	02-2348-2999
Taiwan External Trade Development Council (TAITRA)	02-2725-5200
Bureau of Foreign Trade	02-2351-0271
Taiwan Visitors Association	02-2752-2898
Police Radio Station	02-2388-8099

USEFUL LINKS AND RESOURCES

Professional Support

- Local Government

Cities and Counties	Website
Changhua County	http://www.cieetrc.chc.edu.tw/
Chiayi City	https://school.cy.edu.tw/nss/s/etlrc/index
Chiayi County	http://engsup.cyc.edu.tw/
Hsinchu City	http://163.19.115.7/hcen-center/
Hsinchu County	https://sites.google.com/ncmail.hcc.edu.tw/hccetrc
Hualian County	http://teacher.hlc.edu.tw/?id=542
Kaohsiung City	http://english.djps.kh.edu.tw/index.php
Keelung City	https://englishcenter.kl.edu.tw/
Kinmen County	https://etrc.khes.km.edu.tw/
Lienchiang County	https://www.matsu.edu.tw/Default.aspx
Miaoli County	https://sites.google.com/view/miaoli-etrc
Nantou County	http://netrc.ntct.edu.tw/index.php
New Taipei City	https://englishcenter.ntpc.edu.tw/nss/p/index
Penghu County	http://etrc.phc.edu.tw/
Pintung County	http://www.pieetrc.ptc.edu.tw/nss/p/index
Taichung City	http://eng.tc.edu.tw/
Tainan City	http://tnetrc.dcs.tn.edu.tw/
Taipei City	http://ecamp.syups.tp.edu.tw/
Taitung County	https://english.boe.ttct.edu.tw/
Taoyuan City	http://tycenglish.spps.tyc.edu.tw/
Yilan County	https://2blog.ilc.edu.tw/19977/
Yunlin County	http://yetr.atps.ylc.edu.tw/

Social Support

1. Government Websites:

Ministry of Culture	https://www.moc.gov.tw/en/
Ministry of Education	https://english.moe.gov.tw/
Ministry of Foreign Affairs	https://www.mofa.gov.tw/en/Default.html
Ministry of Health and Welfare	https://www.mohw.gov.tw/mp-2.html
Ministry of Science and Technology	https://www.most.gov.tw/?l=en
National Immigration Agency	https://www.immigration.gov.tw/5475/
Taiwan Centers for Disease Control	https://www.cdc.gov.tw/En

2. Embassies & Missions Aboard of ROC (Taiwan)

East Asia and Pacific	
Australia	https://www.roc-taiwan.org/au_en
Brunei	https://www.roc-taiwan.org/bn_en
Fiji	https://www.roc-taiwan.org/fj_en
India	https://www.roc-taiwan.org/in_en
Indonesia	https://www.roc-taiwan.org/id_en
Japan	https://www.roc-taiwan.org/jp_ja
Korea	https://www.roc-taiwan.org/kr_ko
Malaysia	https://www.taiwanembassy.org/my_en
Marshall Islands	https://www.roc-taiwan.org/mh_en
Myanmar	https://www.roc-taiwan.org/mm_mm
Nauru	https://www.taiwanembassy.org/nr_en
New Zealand	https://www.roc-taiwan.org/nz_en
Palau	https://www.roc-taiwan.org/pal_en

Papua New Guinea	https://www.roc-taiwan.org/pg_en
Philippines	https://www.roc-taiwan.org/ph_en
Singapore	https://www.taiwanembassy.org/sg_en
Thailand	https://www.taiwanembassy.org/th_en
Tuvalu	https://www.roc-taiwan.org/tv_en
Vietnam	https://www.taiwanembassy.org/vn_en
West Asia	
Bahrain	https://www.roc-taiwan.org/bahr_en
Israel	https://www.roc-taiwan.org/il_en
Jordan	https://www.roc-taiwan.org/jo_en
Kuwait	https://www.roc-taiwan.org/kw_en
Mongolia	https://www.roc-taiwan.org/mn_en
Oman	https://www.roc-taiwan.org/om_en
Russia	https://www.tmeccc.org/ru_ru
Saudi Arabia	https://www.taiwanembassy.org/sa_en
Turkey	https://www.roc-taiwan.org/tr_tr
United Arab Emirates	https://www.roc-taiwan.org/dxb_en

Europe	
Austria	https://www.taiwanembassy.org/at_de
Belgium	http://www.taiwanembassy.org/be_en
Czech	https://www.roc-taiwan.org/cz_en
Denmark	https://www.roc-taiwan.org/dk_en
European Union	http://www.taiwanembassy.org/be_en
Finland	https://www.roc-taiwan.org/fi_en
France	https://www.roc-taiwan.org/fr_en
Germany	https://www.roc-taiwan.org/de_de

Greece	https://www.roc-taiwan.org/gr_en
The Holy See	https://www.roc-taiwan.org/va_en
Hungary	https://www.taiwanembassy.org/hu_hu
Ireland	https://www.roc-taiwan.org/ie_en
Italy	https://www.roc-taiwan.org/it_it
Latvia	https://www.roc-taiwan.org/lv_en
Netherlands	https://www.roc-taiwan.org/nl_nl
Poland	https://www.roc-taiwan.org/pl_pl
Portugal	https://www.roc-taiwan.org/pt_pt
Slovakia	https://www.roc-taiwan.org/sk_en
Spain	https://www.roc-taiwan.org/es_es
Sweden	https://www.roc-taiwan.org/se_en
Switzerland	http://www.roc-taiwan.org/wto_en
United Kingdom	https://www.roc-taiwan.org/uk_en
Africa	
Eswatini	https://www.taiwanembassy.org/sz_en
Nigeria	https://www.roc-taiwan.org/ng_en
South Africa	https://www.roc-taiwan.org/za_en

North America	
Canada	https://www.roc-taiwan.org/ca_en
United States	https://www.roc-taiwan.org/us_en
Latin America and Caribbean	
Argentina	https://www.roc-taiwan.org/ar_es
Belize	https://www.taiwanembassy.org/bz_en
Brazil	https://www.roc-taiwan.org/br_pt

Chile	https://www.roc-taiwan.org/cl_es
Colombia	https://www.roc-taiwan.org/co_es
Ecuador	https://www.roc-taiwan.org/ec_es
Guatemala	https://www.taiwanembassy.org/gt_es
Haiti	https://www.taiwanembassy.org/ht_fr
Honduras	https://www.taiwanembassy.org/hn_es
Mexico	https://www.roc-taiwan.org/mx_es
Nicaragua	https://www.taiwanembassy.org/ni_es
Paraguay	https://www.taiwanembassy.org/py_es
Peru	https://www.roc-taiwan.org/pe_es
Saint Christopher and Nevis	https://www.taiwanembassy.org/kn_en
Saint Lucia	https://www.taiwanembassy.org/lc_en
Saint Vincent and the Grenadines	https://www.taiwanembassy.org/vc_en

3. Get Close to The Local

Fight COVID Taiwan	https://fightcovid.edu.tw/home
Office of Global Mandarin Education	https://ogme.edu.tw
TESOL Taiwan	http://www.tesoltaiwan.com/tesol-main.php
Taiwan Hostfamily Program	https://www.hostfamily.org.tw/en
Taiwan Tour Bus	https://www.taiwantourbus.com.tw/C/tw/home
Taiwan Tourism Bureau	https://www.taiwan.net.tw
Tour in Taiwan	https://tourmeaway.com

4. English News

Focus Taiwan	https://focustaiwan.tw/
Taipei News	http://taipeitimes.com/News/taiwan
Taiwan News	https://www.taiwannews.com.tw/en/index
Taiwan Today	https://taiwantoday.tw/index.php